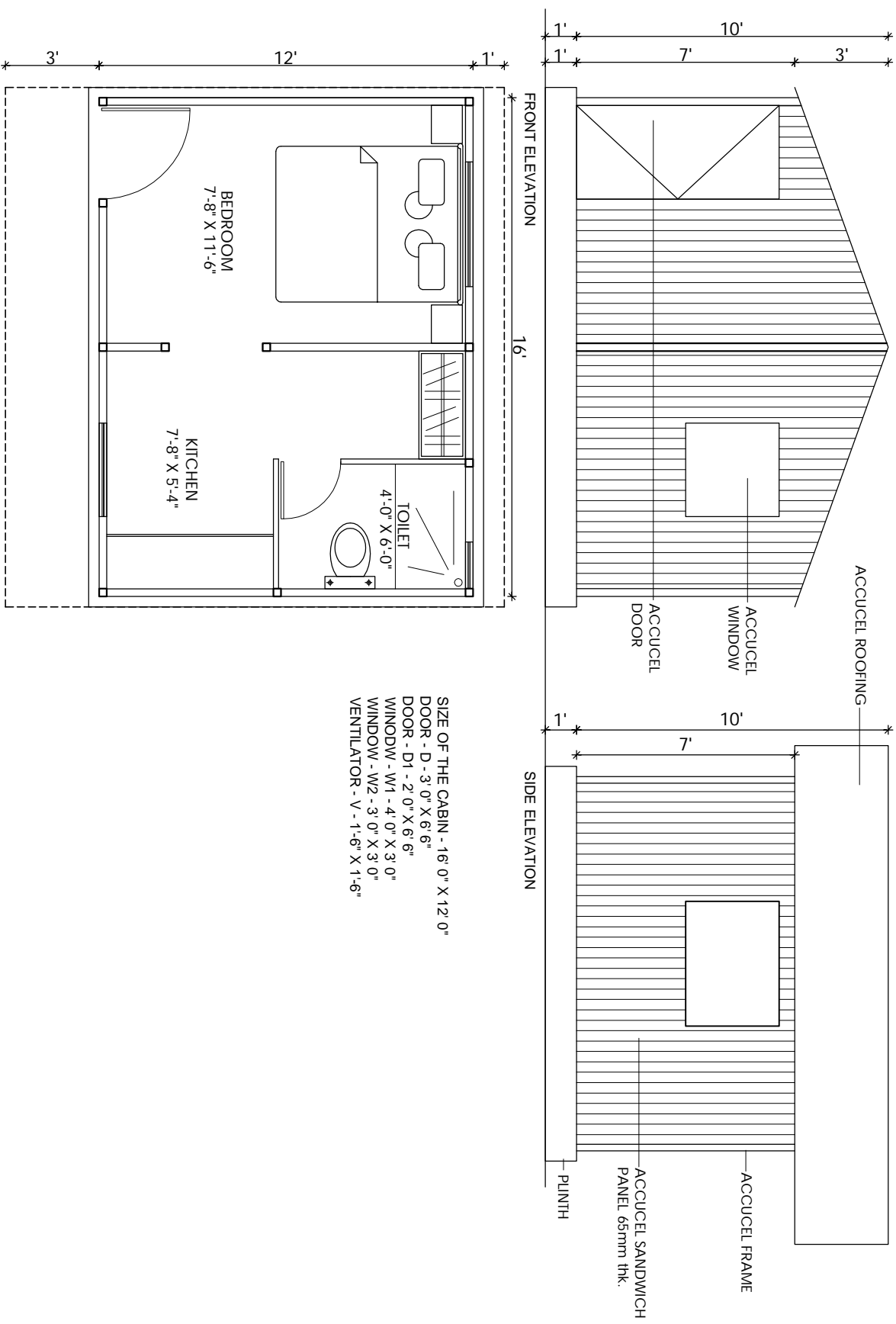


# ACCUCEL MODULAR BUILDING SYSTEM (AMBS)



**ACCUCEL PREFAB CABIN**  
**SIZE : 16'-0" X 12'-0" X 10'-0"ht.**  
**ACCUCEL PREFAB CABIN LAYOUT**

**ACCURA POLYTECH PVT. LTD**  
 OFFICE: 8AJINATH SOC., NR. PULKIT SCHOOL, OPP. PALDI P.O., AHMEDABAD-380007  
 PH- 079 26630154 FAX- 079 26633668  
 accucel@gmail.com

**NOTES:-**  
 - ALL DIM. ARE IN INCHES.  
 - DIMENSIONS SHOULD BE READ & NOT MEASURED.  
 - DWGS. SHALL NOT BE COPY WITHOUT PERMISSION

**accucel**  
 THE ENVIRONMENTAL FRIENDLY SOLUTION  
**PREFAB LAYOUT**  
 SCALE: NTS  
 DATE: 17.06.10  
 CODE: CHK:  
 DRG. NO. D-01